



# GMT MONTHLY MEMBERSHIP PROGRESS REPORT

Results as of: 4/30/2017

Multiple District 7

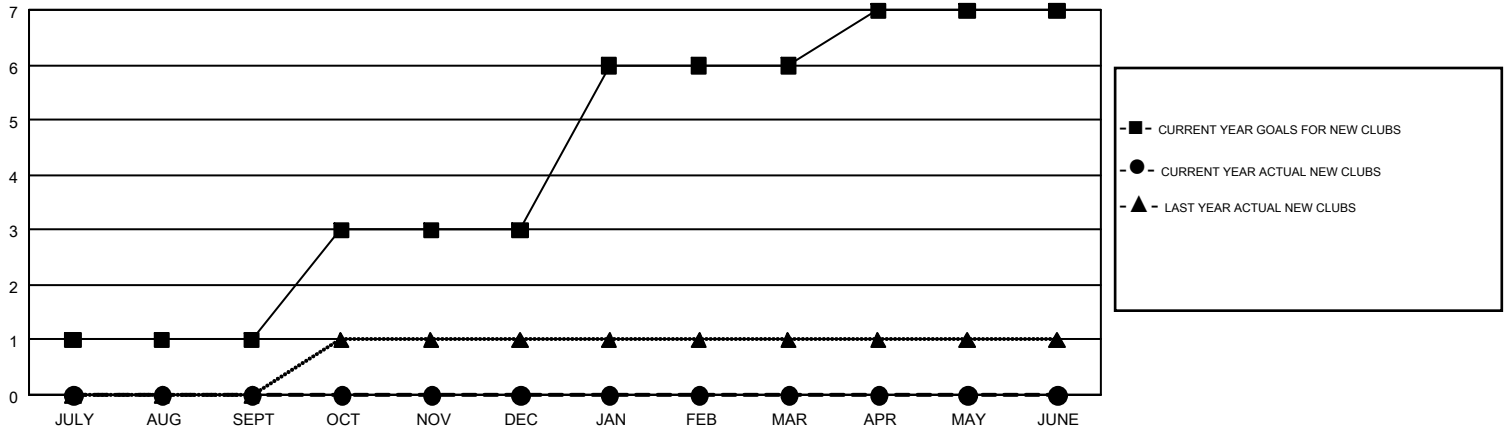
LOCATION: ARKANSAS

GMT: HAL GRIFFIN

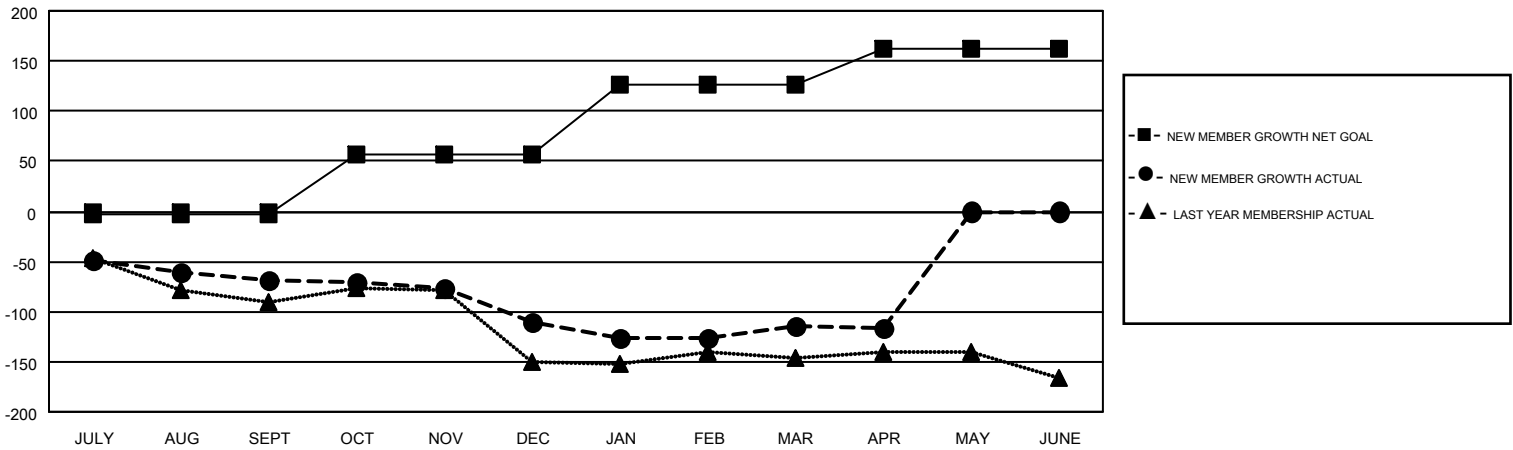
GMT CA 1

Clubs				Members			
RESULTS FOR 2016-2017				RESULTS FOR 2016-2017			
QUARTER	NEW CLUB GOAL	NEW CLUBS	DROPPED CLUBS	QUARTER	NEW MEMBER GROWTH NET GOAL (not reinstated or transfers)	NEW MEMBER GROWTH ACTUAL (not reinstated or transfers)	DROPPED MEMBERS ACTUAL (including transfers)
JULY/AUG/SEPT	1	0	2	JULY/AUG/SEPT	-2	70	138
OCT/NOV/DEC	2	0	1	OCT/NOV/DEC	58	70	113
JAN/FEB/MAR	3	0	0	JAN/FEB/MAR	70	102	106
APR/MAY/JUNE	1	0	0	APR/MAY/JUNE	36	32	34

GOALS AND ACTUAL NEW CLUBS CUMULATIVE



GOALS AND ACTUAL MEMBERS CUMULATIVE



DROPPED CLUBS: 3	83 CLUBS OF 135 ADDED 1 OR MORE NEW MEMBERS	<b>GENDER DISTRIBUTION</b> MALE 2,002 (64.87%) FEMALE 1,084 (35.13%)
<b>DROPPED MEMBERS</b> DECEASED 27 CLUB CANCELLED 9 OTHER 356 <b>TOTAL 392</b>	<a href="#">CLICK HERE FOR CUMULATIVE MEMBERSHIP DATA</a>	TOTAL FAMILY UNIT MEMBERS 491  FAMILY MEMBERS PAYING HALF DUES 251